


ANT S.r.l. Via della Concordia, 4 – 37036 S. Martino B/A (VR) - Italia Tel. +39 045 8781380 Fax +39 045 8795335 e-mail: commerciale@antsrl.eu www.antsrl.eu	DESCRIPTION	
	6-element yagi directive antenna in frequency range VHF / 169 MHz suitable for applications VHF and wireless M-Bus (wM-Bus)	

Yagi-6-169

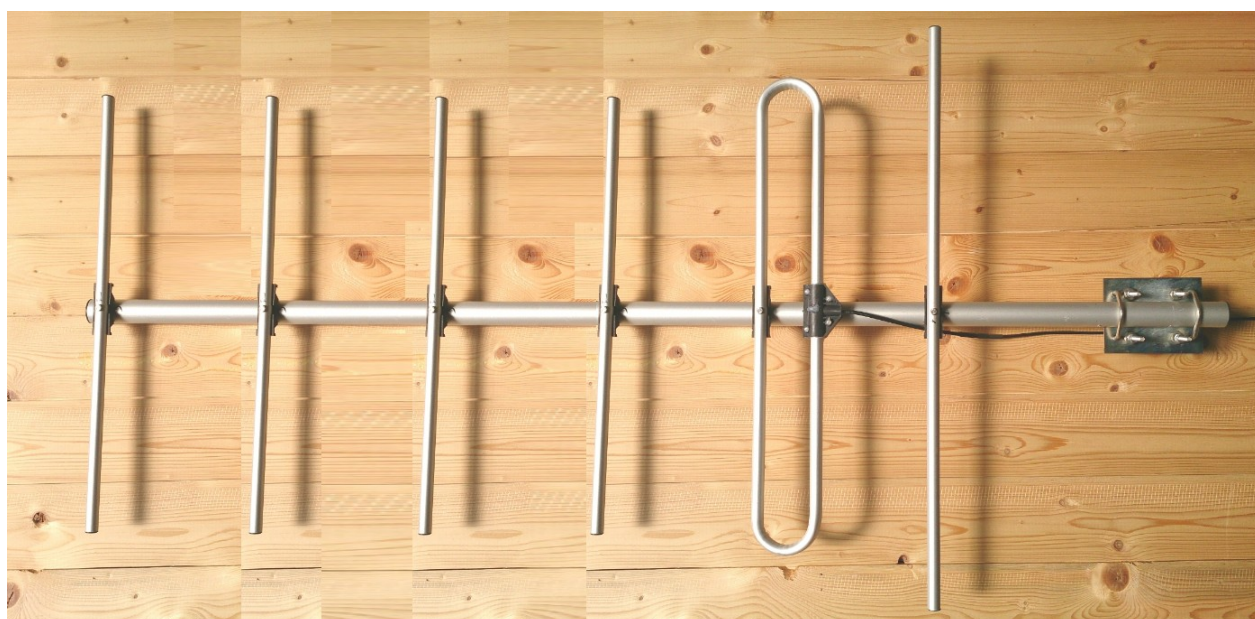
P/N: Y06-000

ELECTRICAL DATA

Frequency range: (with VSWR <2:1):	164 / 174 MHz (available in frequencies 130 to 250 MHz)
Impedance:	50 Ω
V.S.W.R. at 169MHz:	< 1.2 : 1
Max power:	250 W
Polarisation:	Linear H/V
Radiation:	Directional
Gain	>11 dBi
Beamwidth (-3 dB H-plane):	H plane 53°
Beamwidth (-3 dB E-plane)	E plane 45°
Front to back ratio:	15 dB
Protection against electrostatic charges:	DC grounded

MECHANICAL DATA

Dimensions (about):	2000x90 mm
Connection:	N socket (other on request)
Cable:	About 0.5m
Operating temperature range:	-40° / +80°C
Weight (about):	3.500 kg
Wind load:	315 N @ 160 Km/h
Elements material:	Anodised aluminum
Boom material:	Anodised aluminum
Accessories:	Hardware for pole mounting (on request).



Protection against oxidation: the antenna is designed to be able to withstand the worst climatic conditions, and so that the oxidation of its parts is prevented with the plastic parts being made of raw materials resistant to external environmental agents. Its radiating elements made of anodised aluminum

RoHS Directive: The antenna complies with the RoHS Directive and its subsequent.

MOUNTING INSTRUCTIONS

Pole mounting: please use the dedicated hardware for a pole of Ø 40mm (1 inch) to 60 mm (2 inches).

Optional: hardware to mechanically tilt the antenna by 0°, 90°, ±10°, ±20°, ±30°.

NOTE:
the antenna can be installed both in horizontal and vertical polarisation.

ANT S.r.l.

Via della Concordia, 4 – 37036
S. Martino B/A (VR) - Italia
Tel. +39 045 8781380
Fax +39 045 8795335
e-mail: commerciale@antsrl.eu
www.antsrl.eu

DESCRIPTION

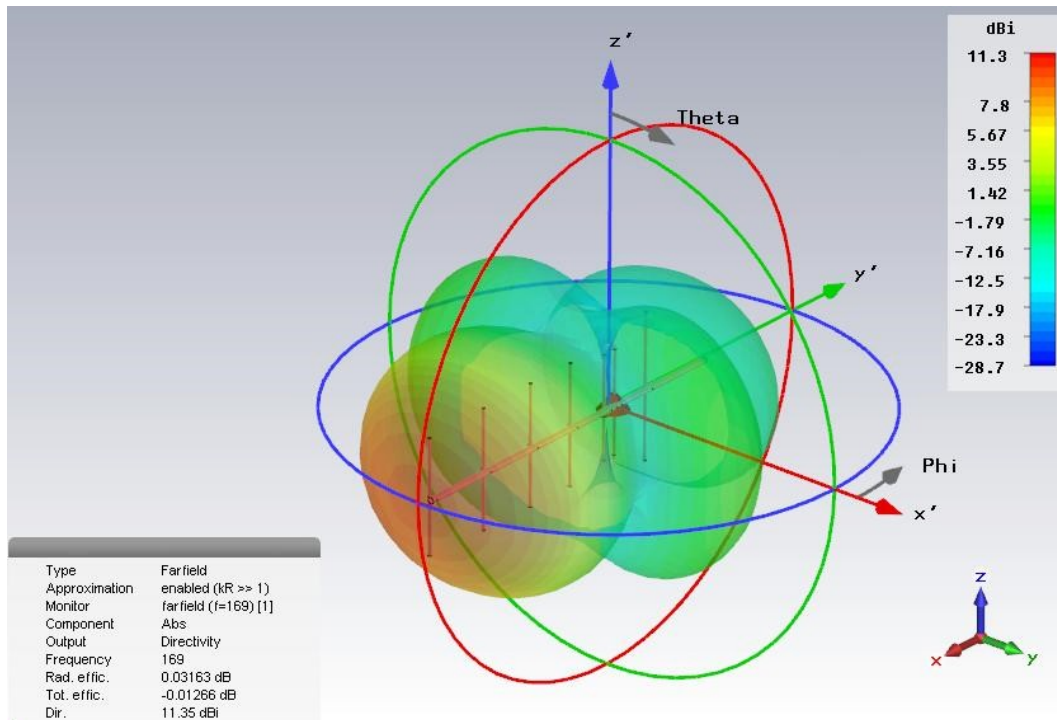
6-element yagi directive antenna in frequency range VHF / 169 MHz
suitable for applications
VHF and wireless M-Bus (wM-Bus)



Yagi-6-169

P/N: Y06-000

3D simulation of radiation

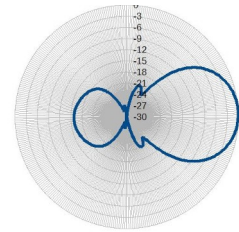
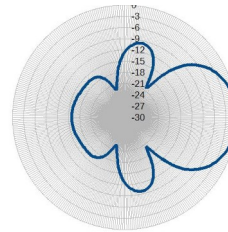
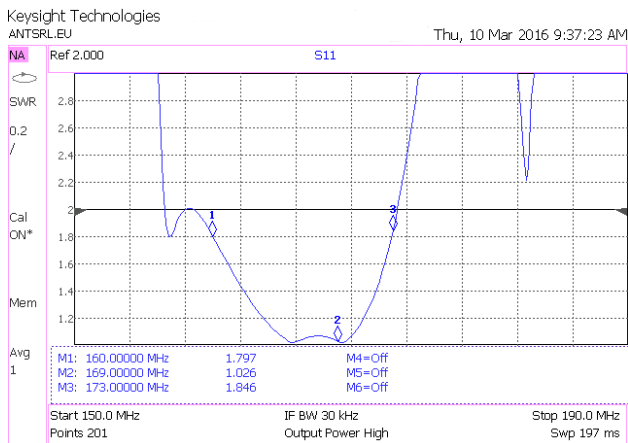


Radiating patterns

VSWR

H-plane

E-plane



ANT S.r.l. si riserva di apportare modifiche e miglioramenti in qualsiasi momento senza obbligo di preavviso
ANT S.r.l. reserves the right to change or improve this documentation at all times and without notice.

ANT S.r.l.

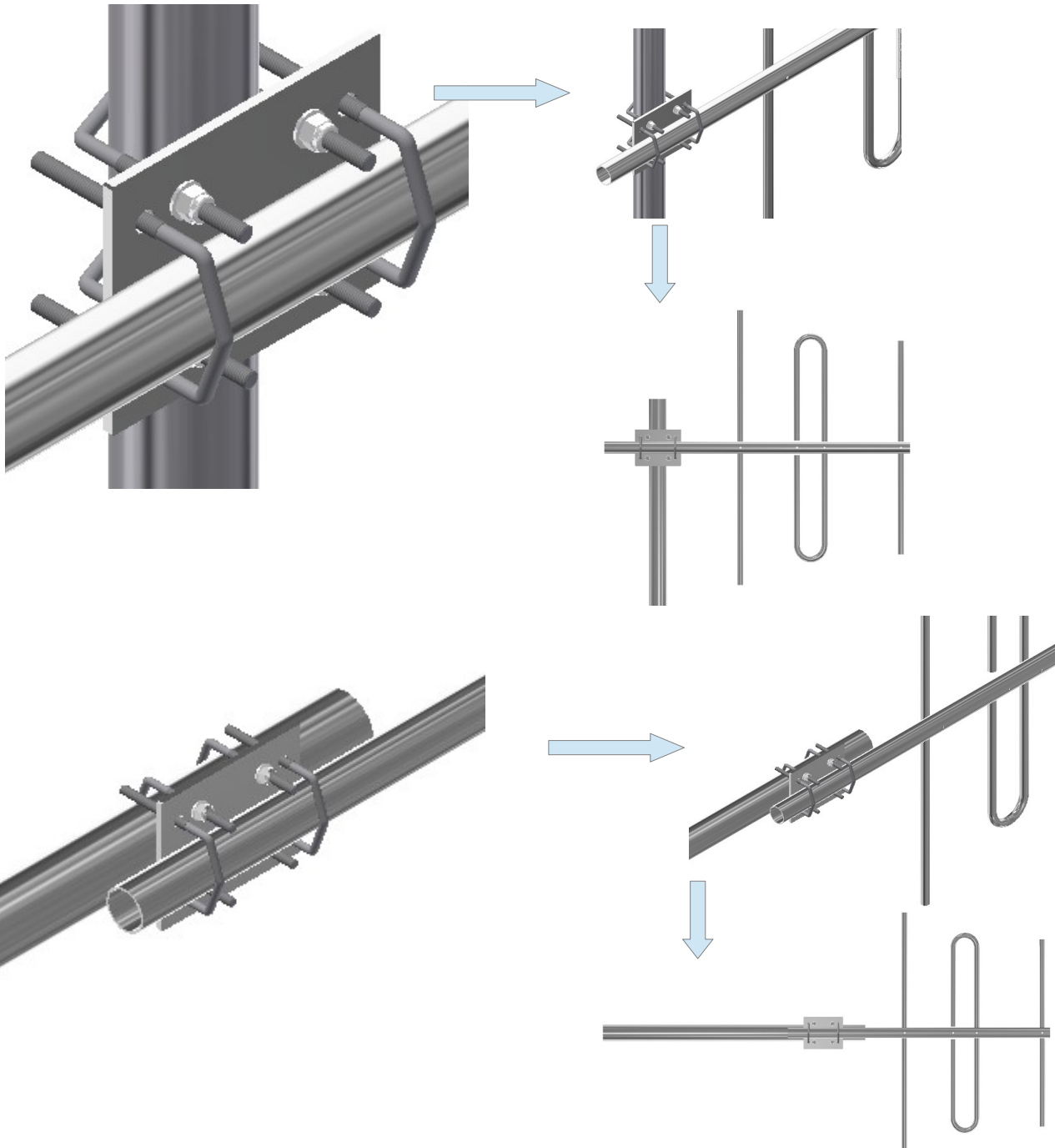
Via della Concordia, 4 – 37036
S. Martino B/A (VR) - Italia
Tel. +39 045 8781380
Fax +39 045 8795335
e-mail: commerciale@antsrl.eu
www.antsrl.eu

DESCRIPTION

**6-element yagi directive antenna in frequency
range VHF / 169 MHz**
suitable for applications
VHF and wireless M-Bus (wM-Bus)

**Yagi-6-169**

P/N: Y06-000

MOUNTING ON MAST Ø40 to 60mm

ANT S.r.l. si riserva di apportare modifiche e miglioramenti in qualsiasi momento senza obbligo di preavviso
ANT S.r.l. reserves the right to change or improve this documentation at all times and without notice.

ENG-Rev. 2