


ANT S.r.l. Via della Concordia, 4 – 37036 S. Martino B/A (VR) - Italia Tel. +39 045 8781380 Fax +39 045 8795335 e-mail: commerciale@antsrl.eu www.antsrl.eu	DESCRIPTION	
	Omnidirectional multi-band antenna for mast or wall installation Suitable for applications 868/915MHz (LoRa, LoRaWAN, Sigfox, ISM), GSM- GPRS 900/1800MHz, 3G-UMTS 2100MHz, WiFi 2.4GHz, 4G-LTE / 5G (Band 1, 2, 3, 5, 8, 20)	

Leste

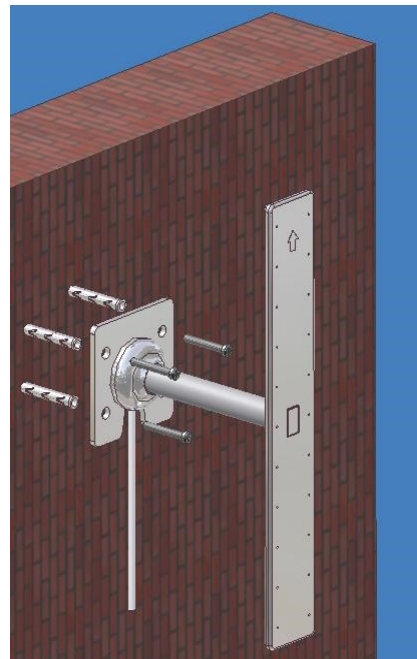
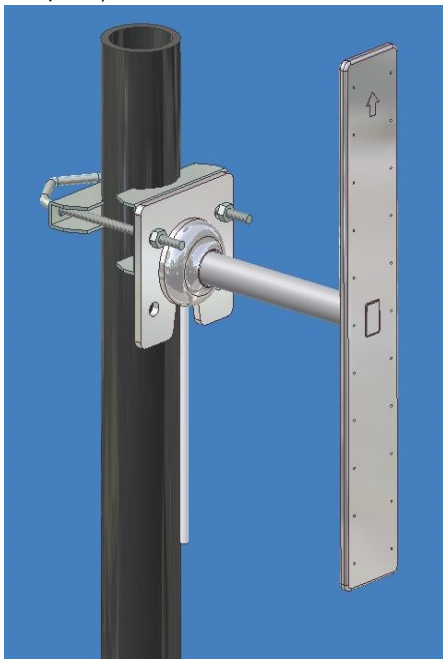
P/N: B03-001

ELECTRICAL DATA

Frequency range:	790-960 / 1710-2170 / 2400-2480 MHz
Impedance:	50 Ω
V.S.W.R. 868/915 MHz:	< 2 : 1
V.S.W.R. 800 MHz:	< 2,5 : 1
V.S.W.R. 900 MHz:	< 2 : 1
V.S.W.R. 1800 MHz:	< 2 : 1
V.S.W.R. 2100 MHz:	< 2,1 : 1
V.S.W.R. 2400 MHz:	< 2 : 1
Max power:	10 W
Polarisation:	Linear
Radiation:	Omnidirectional
Gain 868/915 MHz:	5 dBi
Gain 800 MHz:	5 dBi
Gain 900 MHz:	5 dBi
Gain 1800 MHz:	5 dBi
Gain 2100 MHz:	6 dBi
Gain 2400 MHz:	6 dBi
Beamwidth (-3dB E-plane)	45°
Beamwidth (-3dB H-plane)	360°

MECHANICAL DATA

Dimensions (about):	340x50x155 mm
Connection:	SMA plug (other on request)
Cable:	5m low loss cable CO100 (other on request)
Operating temperature range:	-30° / +75°C
Weight:	0.400 kg
Radome Material:	ABS/PVC/MOPLN
Radiating element material:	Copper



Protection against oxidation: the antenna is designed to be able to withstand the worst climatic conditions and so that the oxidation of its parts is prevented: the plastic parts are made of raw materials resistant to external environmental agents.

Protection against accidental hits: The antenna is designed making sure persons are protected from accidental hits against its projecting parts: the body of the antenna is made of soft material.

RoHS Directive : The antenna complies with the RoHS Directive and its subsequent

MOUNTING INSTRUCTIONS:

Pole mounting: when mounting the antenna on mast please, use the supplied kit.

Wall mounting: when mounting the antenna on wall please use 4 Fischer plugs.

ANT S.r.l.

Via della Concordia, 4 – 37036
S. Martino B/A (VR) - Italia
Tel. +39 045 8781380
Fax +39 045 8795335
e-mail: commerciale@antsrl.eu
www.antsrl.eu

DESCRIPTION

Omnidirectional multi-band antenna
for mast or wall installation
Suitable for applications
868/915MHz (LoRa, LoRaWAN, Sigfox, ISM), GSM-
GPRS 900/1800MHz, 3G-UMTS 2100MHz, WiFi
2.4GHz, 4G-LTE / 5G (Band 1, 2, 3, 5, 8, 20)



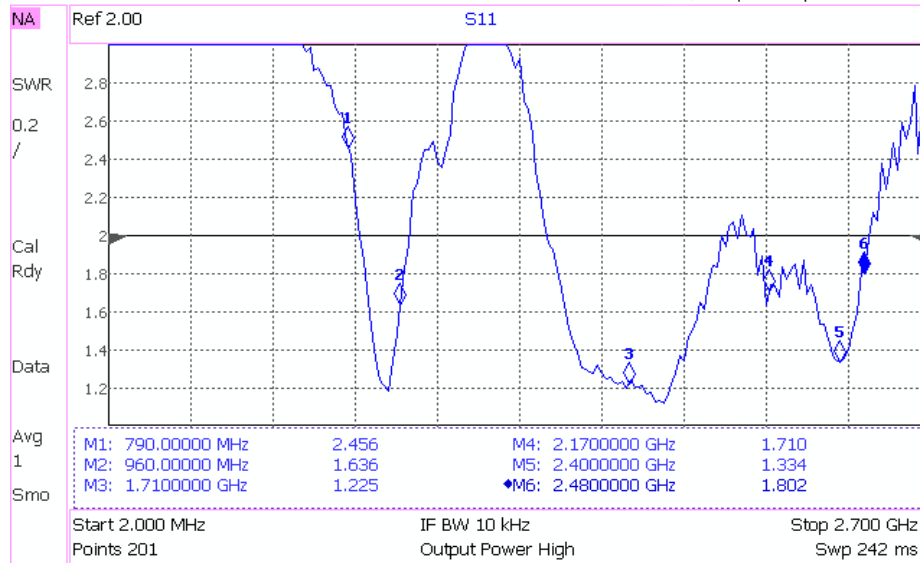
Leste

P/N: B03-001

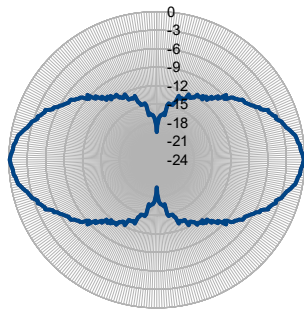
V.S.W.R.

Keysight Technologies

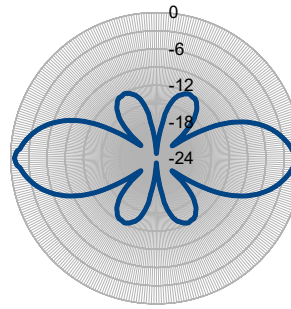
Thu, 29 Sep 2016 09:56



Radiating pattern



900 MHz



1800 MHz