

ANT S.r.l.

Via della Concordia, 4 – 37036
 S. Martino B/A (VR) - Italia
 Tel. +39 045 8781380
 Fax +39 045 8795335
 e-mail: commerciale@antsrl.eu
www.antsrl.eu

DESCRIPTION

868MHz ground plane antenna
(available in frequency 915MHz)
 suitable for applications
 LoRa, LoRaWAN, Sigfox, ISM



Peler 868 (cable 3m)
Peler 868 (cable 4.5m)
Peler 868 (cable 6.5m)

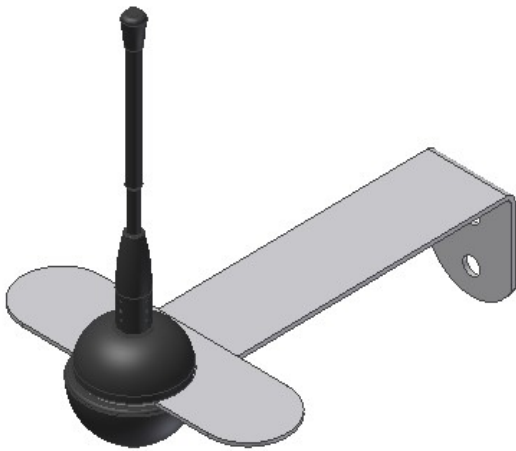
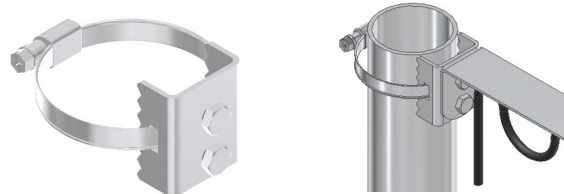
P/N: A03-000
P/N: A03-008
P/N: A03-010

ELECTRICAL DATA

Frequency range with V.S.W.R. < 2 : 1	860 - 880 MHz
Impedance:	50 Ω
V.S.W.R.:	< 1.5 : 1
Max power:	15 W
Polarisation:	Linear
Radiation:	Omnidirectional
Gain:	2.15 dBi (4dBi when mounted on metallic mast)

MECHANICAL DATA

Dimensions (about):	150x100x150 mm
Weight (about):	0.230 kg
Connection:	on request
Cable:	tinplated RG58, 3, 4.5, 6.5m, (other on request)
Operating temperature range:	-40° / +80°C
Bracket/screws material:	Stainless steel
Radiating element material:	Steel, brass
Optional accessories:	Support for mounting on mast (Ø38mm (1.5 inches) to Ø200mm (8 inches))

**OPTIONAL SUPPORT FOR MOUNTING ON MAST**

Protection against oxidation: the antenna is designed to be able to withstand the worst climatic conditions and so that the oxidation of its parts is prevented: the bracket, nuts and screws are made of stainless steel, whereas the plastic parts are made of raw materials resistant to external environmental agents.

Protection against accidental hits: The antenna is designed making sure persons are protected from accidental hits against its projecting parts: the bracket and the whip have been equipped with appropriate plastic bumpers.

RoHS Directive: The antenna complies with the RoHS Directive and its subsequent.

MOUNTING INSTRUCTIONS:

Please use two Fischer plugs for 6 millimetre diameter holes. The antenna is designed to be mounted on wall or mast.

WARNING:

For a correct installation, please mount the antenna so that the whip is in vertical position and at least 10 cm apart from any metallic wall.

ANT S.r.l.

Via della Concordia, 4 – 37036
S. Martino B/A (VR) - Italia
Tel. +39 045 8781380
Fax +39 045 8795335
e-mail: commerciale@antsrl.eu
www.antsrl.eu

DESCRIPTION

868MHz ground plane antenna
(available in frequency 915MHz)
suitable for applications
LoRa, LoRaWAN, Sigfox, ISM



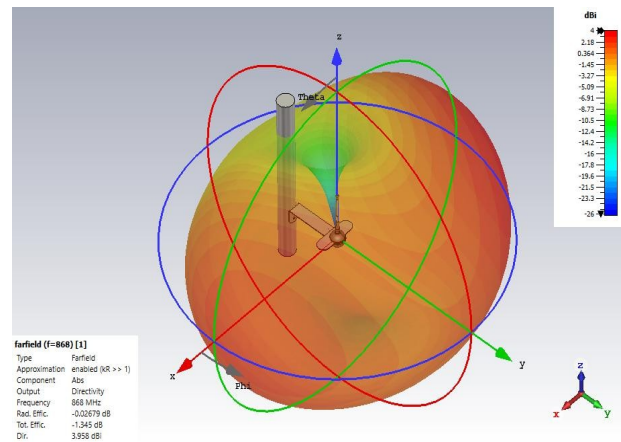
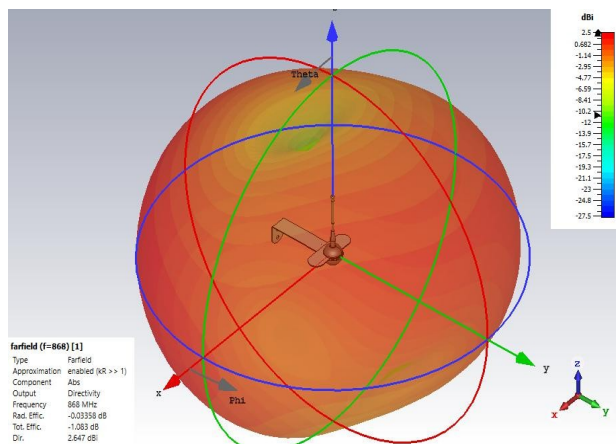
Peler 868 (cable 3m)
Peler 868 (cable 4.5m)
Peler 868 (cable 6.5m)

P/N: A03-000
P/N: A03-008
P/N: A03-010

Radiating pattern

(test with antenna mounted on fiberglass mast)

(test with antenna mounted on steel mast)



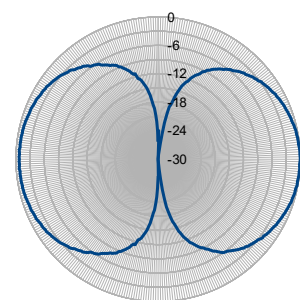
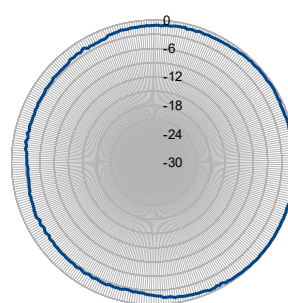
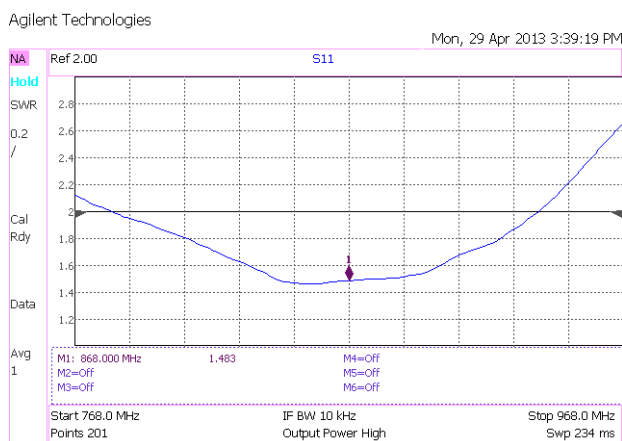
Radiating patterns

(test with antenna mounted of fiberglass mast)

VSWR

H-Plane

E-Plane



ITS NAME:

Peler is a wind typical of the Garda Lake, it blows from the north and affects almost the entire lake, especially its upper and middle reaches. It blows from the early hours of the night until about midday and strengthens after sunrise due to the increase in temperature.

ANT S.r.l. si riserva di apportare modifiche e miglioramenti in qualsiasi momento senza obbligo di preavviso
ANT S.r.l. reserves the right to change or to improve this documentation at all times and without notice.